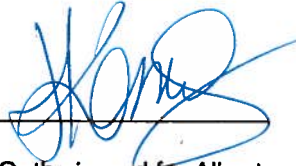


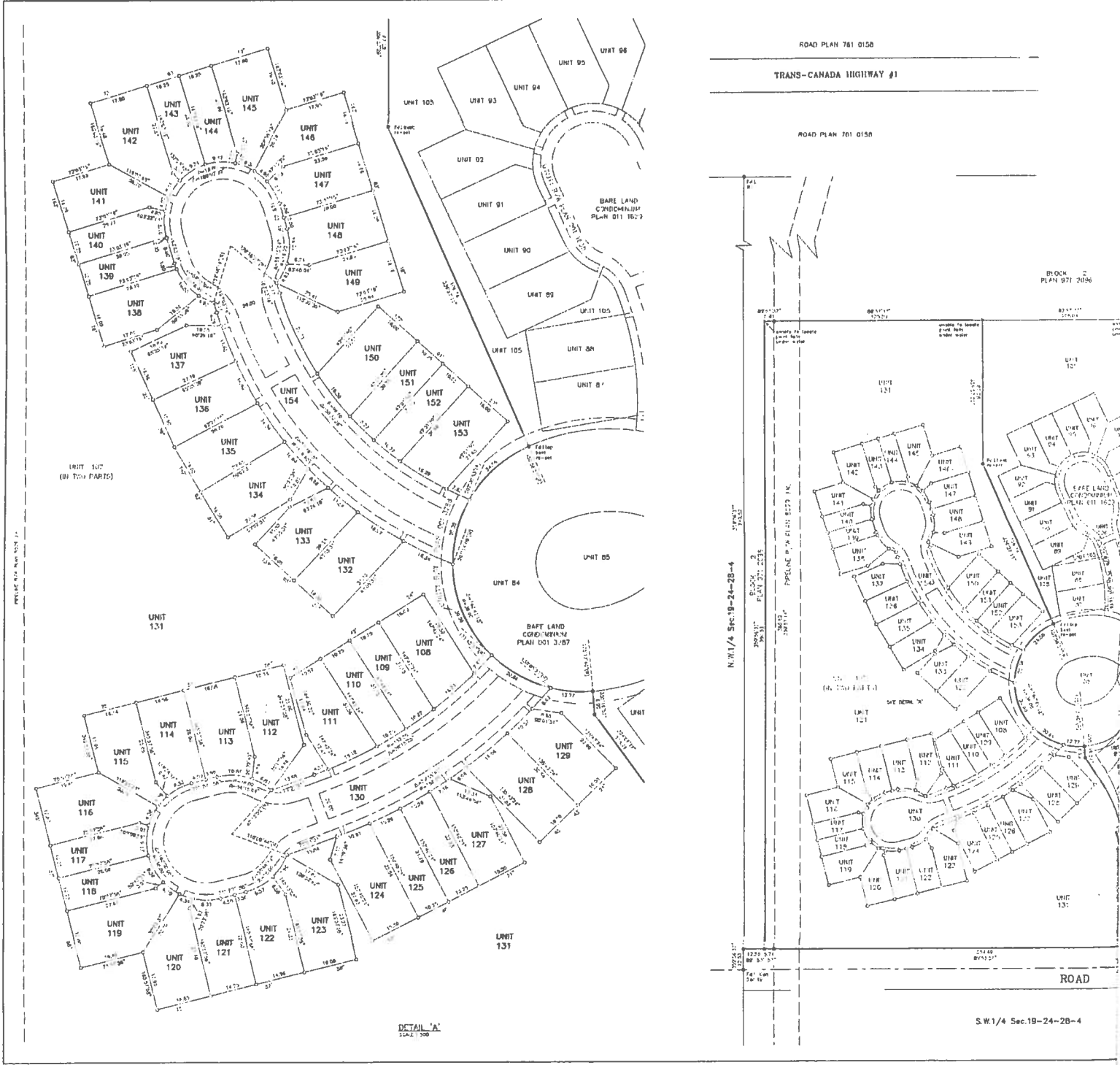
TAB J

This is Exhibit "J" referred to in
the affidavit of Scott McCorquodale
SWORN before me this 29th day of March, 2018



A Commissioner for Oaths in and for Alberta

Jillian R. Karras
Barrister & Solicitor



SCHEDULE OF UNIT FACTORS & AREAS

UNIT NUMBER	UNIT FACTOR	AREA (m ²)
100	1.8	451.8
101	1.8	451.8
102	1.8	451.8
103	1.8	451.8
104	1.8	451.8
105	1.8	451.8
106	1.8	451.8
107	1.8	451.8
108	1.8	451.8
109	1.8	451.8
110	1.8	451.8
111	1.8	451.8
112	1.8	451.8
113	1.8	451.8
114	1.8	451.8
115	1.8	451.8
116	1.8	451.8
117	1.8	451.8
118	1.8	451.8
119	1.8	451.8
120	1.8	451.8
121	1.8	451.8
122	1.8	451.8
123	1.8	451.8
124	1.8	451.8
125	1.8	451.8

SCHEDULE OF UNIT FACTORS & AREAS

UNIT NUMBER	UNIT FACTOR	AREA (m ²)
126	4.6	116.5
127	4.7	121.7
128	4.6	116.5
129	1.0	25.1
130	1.0	25.1
131	1.0	25.1
132	1.0	25.1
133	1.0	25.1
134	1.0	25.1
135	1.0	25.1
136	1.0	25.1
137	1.0	25.1
138	1.0	25.1
139	1.0	25.1
140	1.0	25.1
141	1.0	25.1
142	1.0	25.1
143	1.0	25.1
144	1.0	25.1
145	1.0	25.1
146	1.0	25.1
147	1.0	25.1
148	1.0	25.1
149	1.0	25.1
150	1.0	25.1
151	1.0	25.1
152	1.0	25.1
153	1.0	25.1
154	1.0	25.1
155	1.0	25.1
156	1.0	25.1
157	1.0	25.1
158	1.0	25.1
159	1.0	25.1
160	1.0	25.1
161	1.0	25.1
162	1.0	25.1
163	1.0	25.1
164	1.0	25.1
165	1.0	25.1
166	1.0	25.1
167	1.0	25.1
168	1.0	25.1
169	1.0	25.1
170	1.0	25.1
171	1.0	25.1
172	1.0	25.1
173	1.0	25.1
174	1.0	25.1
175	1.0	25.1
176	1.0	25.1
177	1.0	25.1
178	1.0	25.1
179	1.0	25.1
180	1.0	25.1
181	1.0	25.1
182	1.0	25.1
183	1.0	25.1
184	1.0	25.1
185	1.0	25.1
186	1.0	25.1
187	1.0	25.1
188	1.0	25.1
189	1.0	25.1
190	1.0	25.1
191	1.0	25.1
192	1.0	25.1
193	1.0	25.1
194	1.0	25.1
195	1.0	25.1
196	1.0	25.1
197	1.0	25.1
198	1.0	25.1
199	1.0	25.1
200	1.0	25.1
201	1.0	25.1
202	1.0	25.1
203	1.0	25.1
204	1.0	25.1
205	1.0	25.1
206	1.0	25.1
207	1.0	25.1
208	1.0	25.1
209	1.0	25.1
210	1.0	25.1
211	1.0	25.1
212	1.0	25.1
213	1.0	25.1
214	1.0	25.1
215	1.0	25.1
216	1.0	25.1
217	1.0	25.1
218	1.0	25.1
219	1.0	25.1
220	1.0	25.1
221	1.0	25.1
222	1.0	25.1
223	1.0	25.1
224	1.0	25.1
225	1.0	25.1
226	1.0	25.1
227	1.0	25.1
228	1.0	25.1
229	1.0	25.1
230	1.0	25.1
231	1.0	25.1
232	1.0	25.1
233	1.0	25.1
234	1.0	25.1
235	1.0	25.1
236	1.0	25.1
237	1.0	25.1
238	1.0	25.1
239	1.0	25.1
240	1.0	25.1
241	1.0	25.1
242	1.0	25.1
243	1.0	25.1
244	1.0	25.1
245	1.0	25.1
246	1.0	25.1
247	1.0	25.1
248	1.0	25.1
249	1.0	25.1
250	1.0	25.1
251	1.0	25.1
252	1.0	25.1
253	1.0	25.1
254	1.0	25.1
255	1.0	25.1
256	1.0	25.1
257	1.0	25.1
258	1.0	25.1
259	1.0	25.1
260	1.0	25.1
261	1.0	25.1
262	1.0	25.1
263	1.0	25.1
264	1.0	25.1
265	1.0	25.1
266	1.0	25.1
267	1.0	25.1
268	1.0	25.1
269	1.0	25.1
270	1.0	25.1
271	1.0	25.1
272	1.0	25.1
273	1.0	25.1
274	1.0	25.1
275	1.0	25.1
276	1.0	25.1
277	1.0	25.1
278	1.0	25.1
279	1.0	25.1
280	1.0	25.1
281	1.0	25.1
282	1.0	25.1
283	1.0	25.1
284	1.0	25.1
285	1.0	25.1
286	1.0	25.1
287	1.0	25.1
288	1.0	25.1
289	1.0	25.1
290	1.0	25.1
291	1.0	25.1
292	1.0	25.1
293	1.0	25.1
294	1.0	25.1
295	1.0	25.1
296	1.0	25.1
297	1.0	25.1
298	1.0	25.1
299	1.0	25.1
300	1.0	25.1

SCHEDULE OF UNIT FACTORS & AREAS

UNIT NUMBER	UNIT FACTOR	AREA (m ²)
142	7.1	920.1
143	4.2	525.1
144	2.2	275.1
145	2.2	275.1
146	2.2	275.1
147	2.2	275.1
148	2.2	275.1
149	2.2	275.1
150	2.2	275.1
151	2.2	275.1
152	2.2	275.1
153	2.2	275.1
154	2.2	275.1
155	2.2	275.1
156	2.2	275.1
157	2.2	275.1
158	2.2	275.1
159	2.2	275.1
160	2.2	275.1
161	2.2	275.1
162	2.2	275.1
163	2.2	275.1
164	2.2	275.1
165	2.2	275.1
166	2.2	275.1
167	2.2	275.1
168	2.2	275.1
169	2.2	275.1
170	2.2	275.1
171	2.2	275.1
172	2.2	275.1
173	2.2	275.1
174	2.2	275.1
175	2.2	275.1
176	2.2	275.1
177	2.2	275.1
178	2.2	275.1
179	2.2	275.1
180	2.2	275.1
181	2.2	275.1
182	2.2	275.1
183	2.2	275.1
184	2.2	275.1
185	2.2	275.1
186	2.2	275.1
187	2.2	275.1
188	2.2	275.1
189	2.2	275.1
190	2.2	275.1
191	2.2	275.1
192	2.2	275.1
193	2.2	275.1
194	2.2	275.1
195	2.2	275.1
196	2.2	275.1
197	2.2	275.1
198	2.2	275.1
199	2.2	275.1
200	2.2	275.1
201	2.2	275.1
202	2.2	275.1
203	2.2	275.1
204	2.2	275.1
205	2.2	275.1
206	2.2	275.1
207	2.2	275.1
208	2.2	275.1
209	2.2	275.1
210	2.2	275.1
211	2.2	275.1
212	2.2	275.1
213	2.2	275.1
214	2.2	275.1
215	2.2	275.1
216	2.2	275.1
217	2.2	275.1
218	2.2	275.1
219	2.2	275.1
220	2.2	275.1
221	2.2	275.1
222	2.2	275.1
223	2.2	275.1
224	2.2	275.1
225	2.2	275.1
226	2.2	275.1
227	2.2	275.1
228	2.2	275.1
229	2.2	275.1
230	2.2	275.1
231	2.2	275.1
232	2.2	275.1
233	2.2	275.1
234	2.2	275.1
235	2.2	275.1
236	2.2	275.1
237	2.2	275.1
238	2.2	275.1
239	2.2	275.1
240	2.2	275.1
241	2.2	275.1
242	2.2	275.1
243	2.2	275.1
244	2.2	275.1
245	2.2	275.1
246	2.2	275.1
247	2.2	275.1
248	2.2	275.1
249	2.2	275.1
250	2.2	275.1
251	2.2	275.1
252	2.2	275.1
253	2.2	275.1
254	2.2	275.1
255	2.2	275.1
256	2.2	275.1
257	2.2	275.1
258	2.2	275.1
259	2.2	275.1
260	2.2	275.1
261	2.2	275.1
262	2.2	275.1
263	2.2	275.1
264	2.2	275.1
265	2.2	275.1
266	2.2	275.1
267	2.2	275.1
268	2.2	275.1
269	2.2	275.1
270	2.2	275.1
271	2.2	275.1
272	2.2	275.1
273	2.2	275.1
274	2.2	275.1
275	2.2	275.1
276	2.2	275.1
277	2.2	275.1
278	2.2	275.1
279	2.2	275.1
280	2.2	275.1
281	2.2	275.1
282	2.2	275.1
283	2.2	275.1
284	2.2	275.1
285	2.2	275.1
286	2.2	275.1
287	2.2	275.1
288	2.2	275.1
289	2.2	275.1
290	2.2	275.1
291	2.2	275.1
292	2.2	275.1
293	2.2	275.1
294	2.2	275.1
295	2.2	275.1
296	2.2	275.1
297	2.2	275.1
298	2.2	275.1
299	2.2	275.1
300	2.2	275.1

UNIT FACTORS OR DIMENSIONS IN THE ENTIRE AREA OF EACH UNIT EXCEPT FOR THE COMMON PROPERTY AREAS SHALL BE THE SAME AS EACH UNIT THEREIN. SEE PLAN OF THE UNIT.

NOTE
 FOR ANY ENDORSEMENT, REGISTRATION MEMORIAL NOTIFICATION OR OTHER INSTRUMENT THAT IS TO BE MADE UPON THE PLAN, PLEASE SEE SHEET 2.
Plan 01135200
 WHICH IS ADDED TO THIS PLAN PURSUANT TO THE CONDOMINIUM PROPERTY ACT REGULATIONS
 DATED December 12, 2001 2001
 Keith Stang
 A.D. REGISTRAR

REGISTRAR
LAND TITLES OFFICE
 PLAN NO. 0113520
 ENTERED AND REGISTERED
 ON December 12, 2001
 INSTRUMENT NO: 011372708
Keith Stang
 A.D. REGISTRAR

M.D. OF ROCKY VIEW NO. 44

PLAN SHOWING SURVEY OF
 BARE LAND CONDOMINIUM
 OF
 REDIVISION OF UNIT 107 AND
 4275 UNDIVIDED ONE TEN THOUSANDTH
 SHARES IN THE COMMON PROPERTY
 WITHIN
 N.E.1/4 Sec.19, Twp.24, Rge.28, W. 4 M.

SCALE: 1:1000
 BY: ADZ M. DHARAMSH, A.L.S., 2001

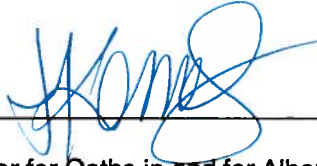
LEGEND
 Dotted line shows area in metres and depends thereon.
 Strip Long Iron Posts are shown thus, found as plotted or marked P 075.
 Area referred to by this plan is outlined thus, and contains 102 (102.0000) square metres.
 Distances on curved boundaries are Arc distances.
 The Grid Bearings are given from GNS 83/00.
 The Elevation of any Unit is determined by the measurements and is subject to the Survey Act.
 Unit Numbers are shown thus, Unit 107 and Unit 130 etc.

ABBREVIATIONS
 P.L. - Proposed Lot, S.E. - Section, Twp. - Township, Rge. - Range, W. - West, N. - North
 P.S. - Public Survey, P.L. - Lot, P.C. - Part of Centre of Road, P. - Part of
 Contour, H. - Height.

SUR

TAB K

This is Exhibit "K" referred to in
the affidavit of Scott McCorquodale
SWORN before me this 29th day of March, 2018



A Commissioner for Oaths in and for Alberta

Jillian R. Karras
Barrister & Solicitor

3TM COORDINATE TABLE		
POINT	NORTHING	EASTING
1000	5659852.754	7261.783
1001	5659860.512	7284.182
1002	5659871.703	7328.862
1003	5659874.833	7346.757
1004	5659871.561	7331.158
1005	5659876.611	7422.163
1006	5659851.838	7418.414
1007	5659874.212	7442.209
1008	5659861.197	7482.192
1009	5659862.194	7488.869
1010	5659875.481	7516.819
1011	5659888.374	7486.780
1012	5659881.175	7436.710
1013	5659880.018	7390.518
1014	5659883.106	7338.754
1015	5659883.064	7314.486
1016	5659883.074	7320.261
1017	5659883.065	7301.034
1018	5659883.054	7210.003
1019	5659875.059	7327.171
1020	5659886.480	7298.278
1021	5659883.710	7298.695
1022	5659886.684	7324.718
1023	5659883.365	7321.676
1024	5659888.550	7293.192
1025	5659881.300	7212.344
1026	5659884.481	7321.466
1027	5659880.287	7318.811
1028	5659871.508	7210.155
1029	5659872.388	7261.527
1030	5659880.445	7317.421
1031	5659888.166	7274.065
1032	5659890.630	7316.265
1033	5659893.590	7288.419
1034	5659893.413	7206.690
1035	5659896.304	7314.950
1036	5659892.346	7312.878
1037	5659896.333	7306.950
1038	5659895.568	7302.076
1039	5659894.431	7276.977
1040	5659891.402	7276.043
1041	5659891.333	7306.158
1042	5659894.036	7311.417
1043	5659894.861	7324.089
1044	5659892.510	7308.116
1045	5659897.266	7305.398
1046	5659895.171	7325.082
1047	5659893.255	7304.893
1048	5659890.152	7305.749
1049	5659890.070	7300.949
1050	5659891.340	7274.651
1051	5659897.204	7323.056
1052	5659898.444	7279.228
1053	5659898.688	7308.546
1054	5659899.235	7312.104
1055	5659891.246	7307.084
1056	5659892.841	7321.837
1057	5659894.876	7322.028
1058	5659898.474	7331.942
1059	5659891.819	7335.028
1060	5659892.705	7335.892
1061	5659892.208	7321.511
1062	5659892.343	7329.689
1063	5659897.374	7320.682
1064	5659895.695	7343.785
1065	5659892.252	7330.378
1066	5659895.996	7340.924
1067	5659899.510	7341.328
1068	5659899.405	7321.600
1069	5659897.435	7322.614
1070	56598974.518	7341.923
1071	5659898.009	7342.045
1072	5659897.889	7324.880
1073	5659895.237	7337.800
1074	5659893.770	7336.734
1075	5659895.639	7344.359
1076	5659890.487	7323.612
1077	5659892.468	7346.947
1078	5659896.850	7334.974
1079	5659894.271	7336.152
1080	5659894.672	7366.418
1081	5659893.166	7368.147
1082	5659892.875	7338.070
1083	5659891.733	7339.618
1084	5659891.976	7369.254
1085	5659899.786	7320.362
1086	5659896.618	7341.416
1087	5659893.885	7344.724
1088	5659893.880	7327.091
1089	5659881.486	7423.556
1090	5659883.701	7424.143
1091	5659887.256	7393.929
1092	5659890.427	7395.954
1093	5659895.819	7423.149
1094	5659891.443	7428.104
1095	5659891.299	7397.980
1096	5659895.166	7254.005
1097	5659891.904	7298.195
1098	5659892.248	7427.607
1099	5659892.796	7427.173
1100	5659893.492	7426.998
1101	5659892.556	7414.592
1102	5659892.410	7392.096
1103	5659893.338	7390.577
1104	5659894.466	7423.376
1105	5659893.656	7415.228
1106	5659894.614	7423.213
1107	5659894.049	7435.192
1108	5659892.340	7417.273
1109	5659895.924	7416.931
1110	5659893.265	7389.058

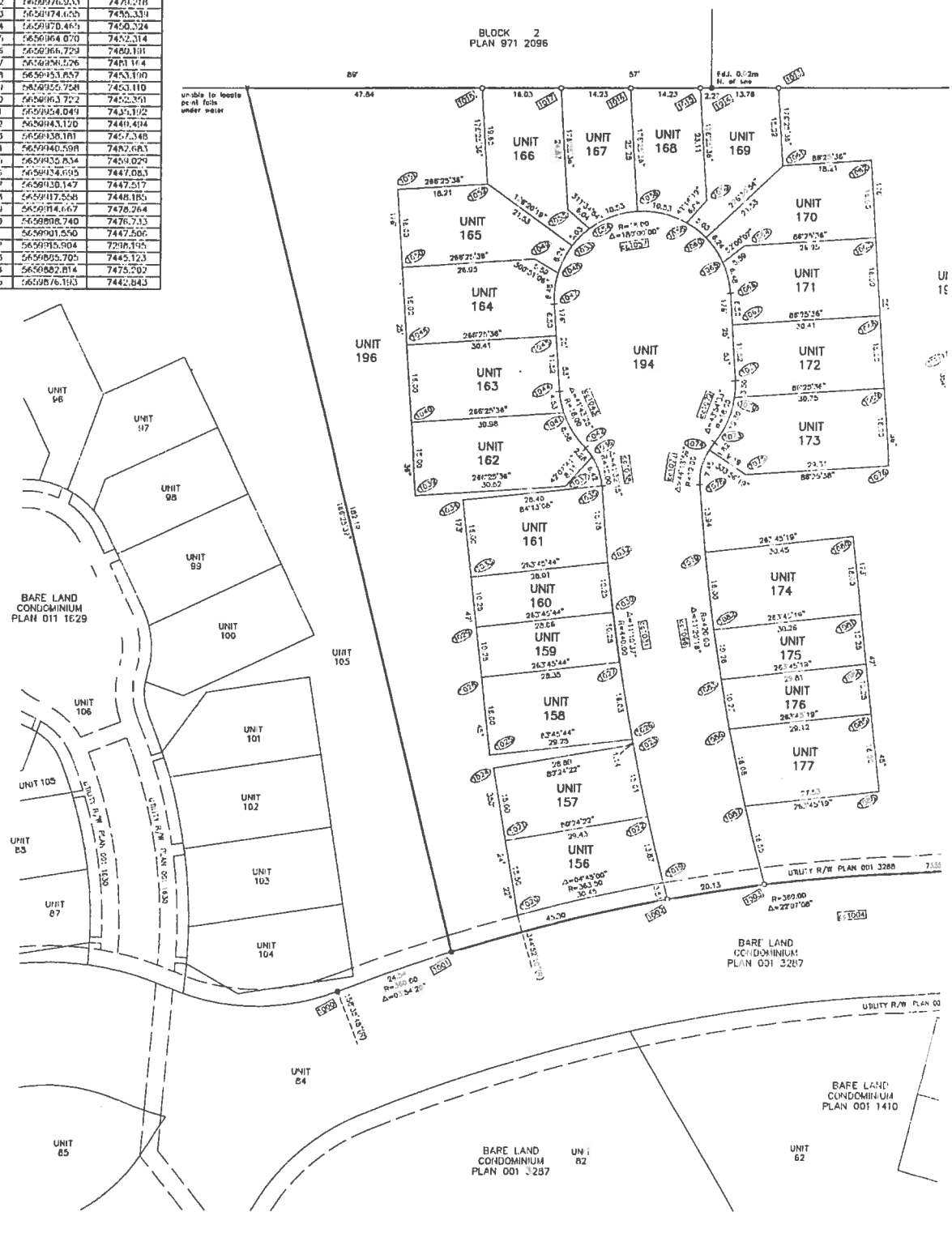
3TM COORDINATE TABLE		
POINT	NORTHING	EASTING
1111	5659888.108	7387.833
1112	5659870.475	7411.515
1113	5659867.380	7417.228
1114	5659860.304	7416.511
1115	5659872.349	7414.185
1116	5659885.830	7403.103
1117	5659884.124	7386.114
1118	5659880.142	7402.141
1119	5659886.832	7418.880
1120	5659871.285	7422.489
1121	5659871.712	7424.045
1122	5659871.032	7433.221
1123	5659867.888	7430.014
1124	5659888.771	7440.268
1125	5659891.232	7442.892
1126	5659898.411	7441.854
1127	5659894.013	7434.432
1128	5659874.040	7448.104
1129	5659891.186	7458.829
1130	5659890.464	7457.107
1131	5659892.881	7427.688
1132	5659876.033	7421.218
1133	5659874.625	7455.338
1134	5659870.465	7450.324
1135	5659864.070	7452.314
1136	5659866.229	7469.181
1137	5659858.576	7481.114
1138	5659853.857	7453.110
1139	5659852.758	7453.110
1140	5659863.702	7452.351
1141	5659864.049	7431.192
1142	5659843.120	7441.614
1143	5659838.181	7457.348
1144	5659840.598	7462.683
1145	5659835.834	7459.029
1146	5659834.695	7447.083
1147	5659830.147	7447.517
1148	5659817.558	7448.185
1149	5659814.667	7476.264
1150	5659808.740	7476.733
1151	5659801.550	7447.506
1152	5659815.904	7218.195
1153	5659805.705	7445.123
1154	5659802.814	7475.202
1155	5659876.183	7442.843

SCHEDULE OF UNIT FACTORS & AREAS		
UNIT NUMBER	UNIT FACTOR	AREA (m ²)
154	4.1	432.1
157	4.5	436.8
158	4.7	460.2
159	3.0	288.9
160	2.9	287.2
161	4.6	447.4
162	2.1	491.3
163	2.0	467.4
164	2.0	465.3
165	4.6	441.1
166	4.4	471.9
167	3.9	377.4
168	3.8	361.0
169	4.0	306.0

SCHEDULE OF UNIT FACTORS & AREAS		
UNIT NUMBER	UNIT FACTOR	AREA (m ²)
170	4.1	444.7
171	5.0	481.0
172	4.7	450.8
173	5.4	507.1
174	2.0	408.4
175	2.2	308.1
176	2.1	301.2
177	4.7	414.0
178	5.1	417.9
179	2.1	412.1
180	2.1	416.1
181	4.8	417.7
182	4.3	471.1
183	4.0	422.0

SCHEDULE	
UNIT NUMBER	AREA (m ²)
166	444.7
167	436.8
168	460.2
169	288.9
170	287.2
171	447.4
172	491.3
173	467.4
174	465.3
175	441.1
176	471.9
177	377.4
178	361.0
179	448.1
180	453.3
181	441.1
182	471.9
183	306.0
TOTAL	4717.7

UNIT FACTORS ARE PROPORTIONAL TO THE INTERIOR AREA OF EACH UNIT EXCEPT FOR THE COMMON USE AREA UNITS 194, 195, 199 AND 197 EACH HAVE BEEN ASSIGNED A UNIT FACTOR OF 1



CERTIFICATE
SECTION 43 OF THE SURVEYS ACT

REGISTERED ON 2 June 2004
AS NUMBER 041201429

ALL STATUTORY MONUMENTS WERE PLACED IN THE GROUND BETWEEN THE DATES OF 17 October 2003 AND 12 January 2004 AND ARE POSITION IN ACCORDANCE WITH THE COORDINATES SHOWN ATTACHED TO THE SUBDIVISION INSTRUMENT

Except for the following:
Drill holes were placed at the following Point Numbers:
1048 1095 1064 1071 1093 1106
1049 1098 1065 1082 1100 1138
1054 1059 1070 1086 1104 1139

Wayne S. Johnson
A.D. REGISTRAR

NOTE

FOR ANY ENDORSEMENT, REGISTRATION MEMORIAL NOTIFICATION OR OTHER ENTRY THAT IS TO BE MADE UPON THE PLAN, PLEASE SEE SHEET 2

Plan 9812469 WHICH IS ADDED TO THIS PLAN PURSUANT TO THE CONDOMINIUM PROPERTY ACT REGULATIONS

DATED January 8, 2003

Keith Stang
A.D. REGISTRAR

REGISTRAR
LAND TITLES OFFICE

PLAN NO. 0310076

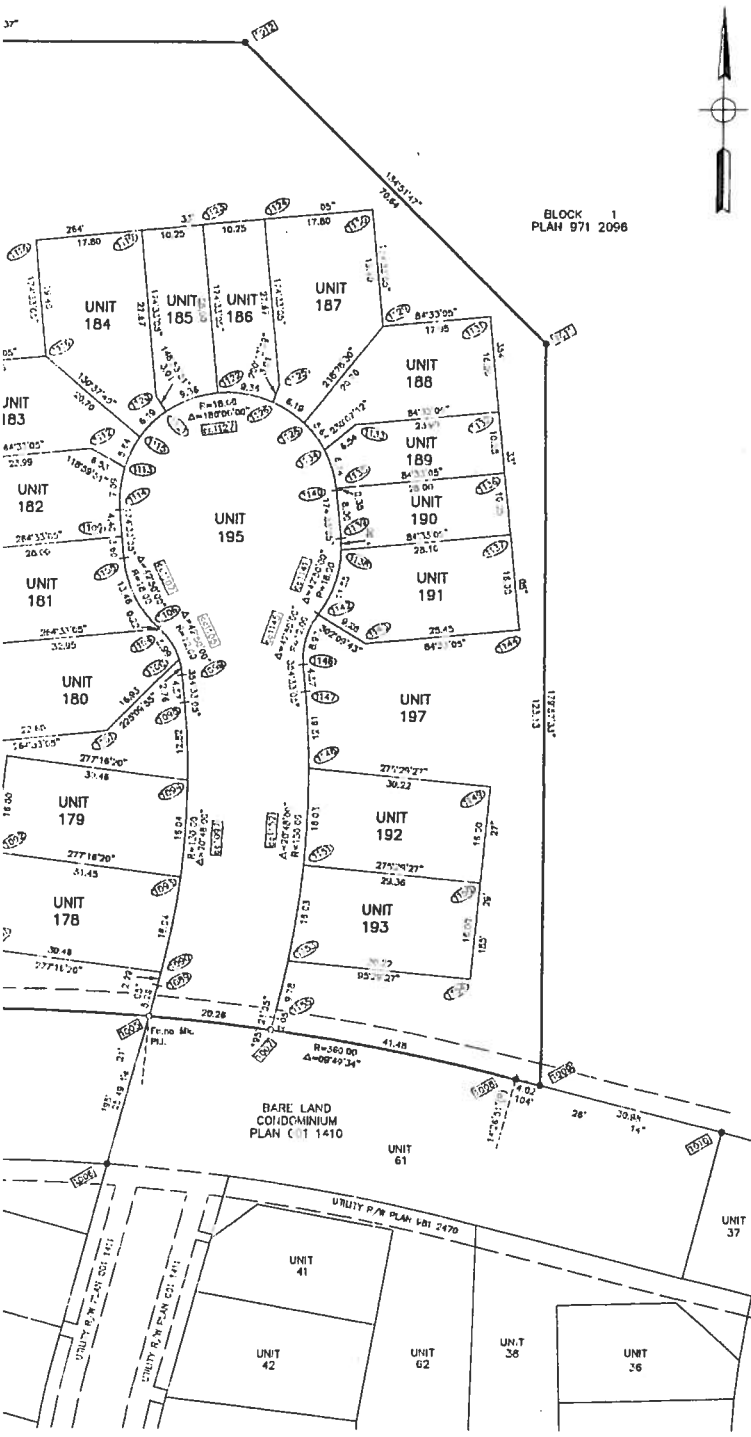
ENTERED AND REGISTERED
ON January 8, 2003

INSTRUMENT NO: 031008428

Keith Stang
A.D. REGISTRAR

T FACTORS & AREAS

UNIT	AREA (m ²)
1	400.1
2	215.7
3	215.2
4	400.1
5	422.0
6	265.3
7	265.3
8	422.0
9	474.3
10	474.3
11	474.3
12	4067.2
13	22591.3
14	4355.7
15	9374.6
16	35526.4



M.D. OF ROCKY VIEW NO. 44

PRINCE OF PEACE VILLAGE

PLAN SHOWING SURVEY OF
BARE LAND CONDOMINIUM
OF
REDIVISION OF UNIT 155 AND
1,663 UNDIVIDED ONE TEN THOUSANDTH
SHARES IN THE COMMON PROPERTY
WITHIN BARE LAND CONDOMINIUM
PLAN 011 3520

WITHIN
N.E.1/4 Sec.19, Twp.24, Rge.28, W. 4 M.

SCALE: 1:500

BY: AZIZ M. DHARAMSHI, A.L.S., 2002

LEGEND

Distances shown are in metres and decimals thereof.

Statutory iron posts found are shown thus:

Statutory iron posts placed and marked 'P 078' are shown thus:

Curve centre coordinates are shown thus:

The position where statutory iron posts to be placed pursuant to Ser. 43 of the Survey Act are numbered thus:

Note: Co-ordinates positions of the Monuments Found or Placed by this survey, Survey Control Markers used, Reference Monuments installed and the location of all Monuments To Be Placed in accordance with section 43 of the Survey Act, are shown in a table of co-ordinates attached to the plan.

Coordinates in table are ground coordinates.

Area referred to by this plan is outlined thus: and contains 3.53ha. (86ba.) comprising 42 Units.

Distances on curved boundaries are Arc distances.

The bearings copied from plan 011 3520.

The Boundary of any Unit is governed by the monuments placed pursuant to the Survey Act.

Unit Numbers are shown thus: UNIT 155, UNIT 157 etc.

DATUM: NAD 83
PROJECTION: 3° TRANSVERSE MERCATOR COORDINATES
REFERENCE MERIDIAN: 114°
COMBINED SCALE FACTOR 0.999735

ABBREVIATIONS:

N.L.—Northwest, Sec.—Section, Twp.—Township, Rge.—Range, W.—West, M.—Meridian.

Fd.—Found Iron Post, Fd. no. Mx.—Found no. Mark, R/W.—Right-of Way, (R)—Radial, N.—North.

SURVEYOR

NAME: AZIZ M. DHARAMSHI, A.L.S.
DATES OF SURVEY: BETWEEN NOVEMBER 12, 2001
AND JULY 30, 2002



REGISTERED OWNERS

LUTHERAN CHURCH—CANADA,
THE ALBERTA—BRITISH COLUMBIA DISTRICT.

APPROVING AUTHORITY

NAME: M.D. OF ROCKY VIEW NO. 44
FILE NO. D-319010/2001RV100
04319004/BE/RV185
DATE APPROVED: DECEMBER 05, 2002