

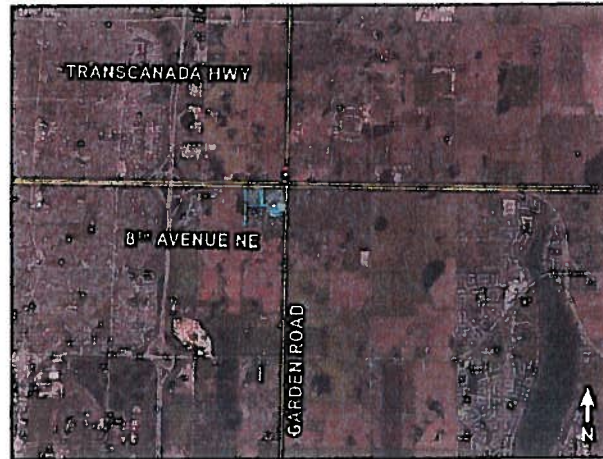
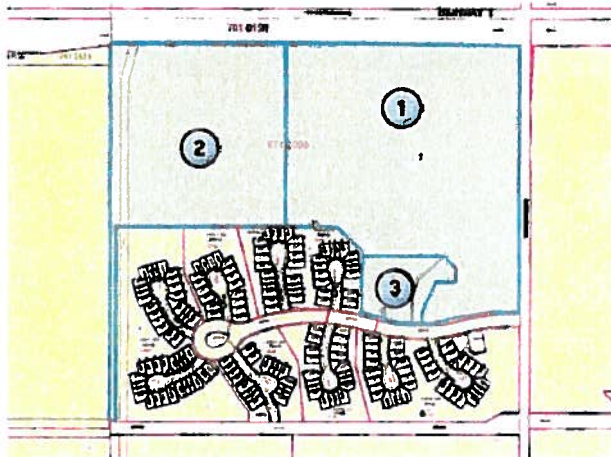
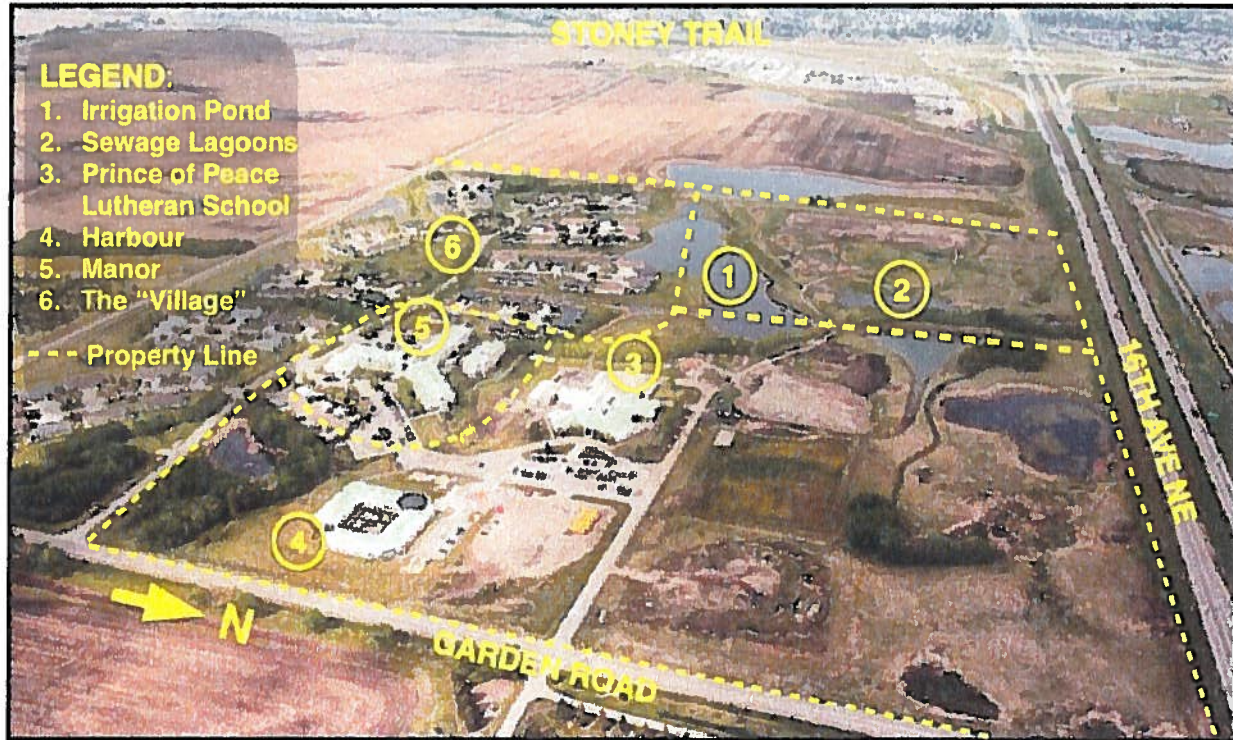
TAB N

This is Exhibit "N" referred to in
the affidavit of Scott McCorquodale
SWORN before me this 29th day of March, 2018



A Commissioner for Oaths in and for Alberta

Jillian R. Karras
Barrister & Solicitor



	PARCEL 1	PARCEL 2	PARCEL 3
Municipal Addresses:	243209 Garden Road, Plan 9712096; Block 1	Plan 9712096; Block 2	285030 Luther Rose Boulevard, Plan 0311251; Block 4; Lot 1
Size:	22.25 Hectares (55.01 Acres)	12.88 Hectares (31.83 Acres)	19 Hectares (4.7 Acres)
Zoning:	PS (Public Services District)	DC 11 (Seniors Housing)	DC 79 (Seniors/Assisted Living)
Buildings:	<ul style="list-style-type: none"> Single story free-standing building in a secure living environment (memory care) on approximately 1.4 acres 32 studio suites (constructed circa 2009) The "Harbour" (24,625 sq. ft.) Prince of Peace Lutheran School (41,874 sq. ft.) Public School with 443 students Leased to Rocky View Schools. 	N/A	<ul style="list-style-type: none"> 3 storey wood-frame structure 159 suites (constructed circa 2002; expansion circa 2010) the "Manor" 44,965 sq. ft.